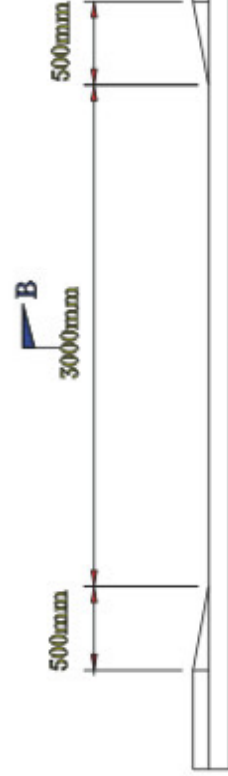
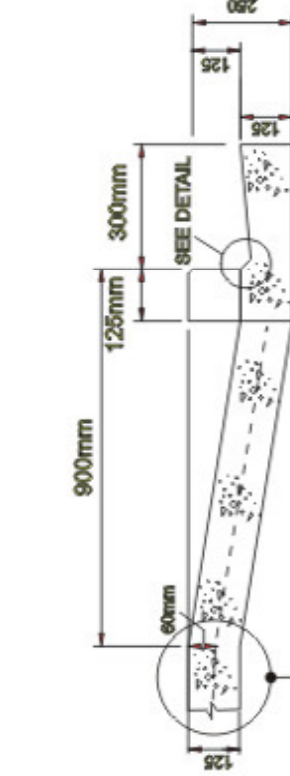


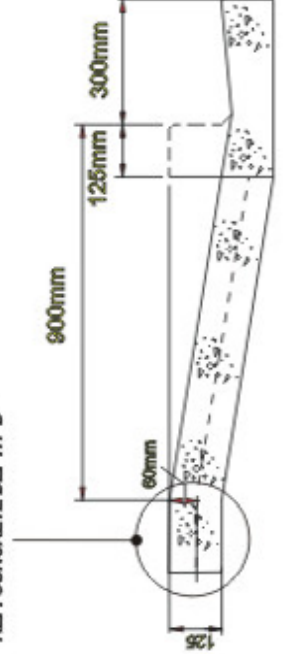
PLAN OF VEHICLE DISH CROSSING



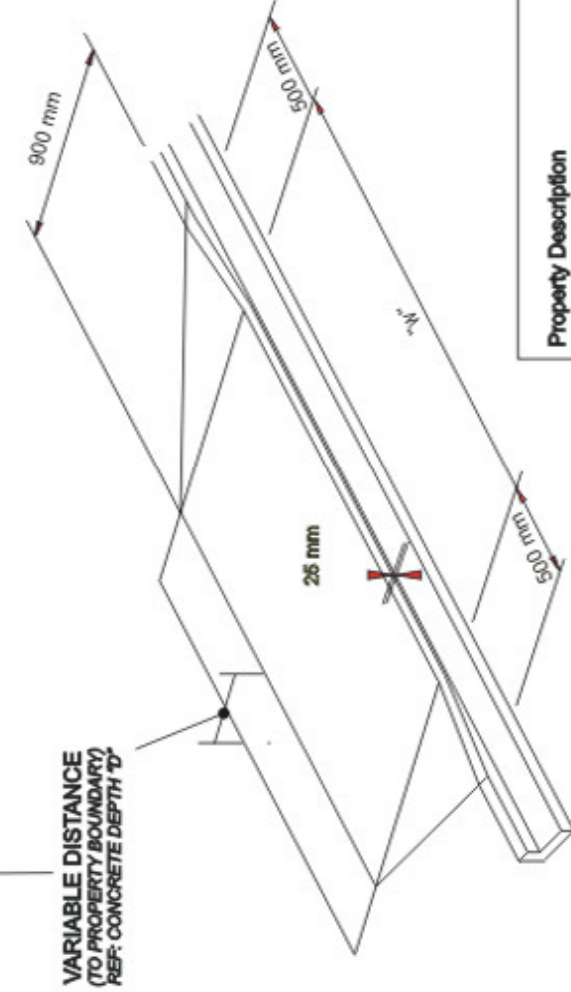
SECTION A-A



SECTION B-B STANDARD CROSSING

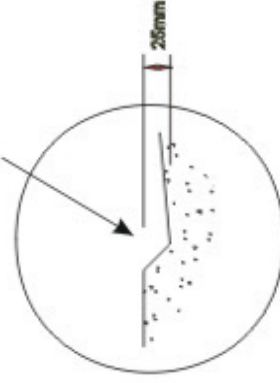


SECTION B-B NO LIP CROSSING



MINIMUM STANDARDS FOR VEHICLE CROSSINGS ONTO URBAN ROADS

ANGLE OF KERB AT 45° FOR WHEELCHAIR ACCESS



DETAIL

**NOTE:**

- FOR COMMERCIAL CROSSINGS
- APRON THICKNESS 150mm
- D12 REINFORCING BAR AT 250mm
- CENTRES BOTH WAYS OR 665 HRC MESH
- REINFORCING 60mm COVER FROM BASE
- MINIMUM CONCRETE COMPRESSIVE STRENGTH TO BE 20MPa AT 25 DAYS
- CONCRETE CROSSING 20 Mpa
- KERB & CHANNEL 17.5 Mpa

**NOTE: NO LIP CROSSING REQUIRED:**

- IN CENTRAL BUSINESS DISTRICT. (C.B.D.)
- IN SUBURBAN SHOPPING PRECINCTS
- OR OTHER HIGH PEDESTRIAN TRAFFIC AREAS
- WHERE CHANNEL GRADIENT IS SUFFICIENT TO PREVENT SILTING OF THE CROSSING INVERT.

VARIABLE DISTANCE (TO PROPERTY BOUNDARY) REF: CONCRETE DEPTH 'D'

VARIABLE DISTANCE (TO PROPERTY BOUNDARY) REF: CONCRETE DEPTH 'D'

Property Description	Width "W"	Concrete Depth "D"	HRC
Residential 1-3 Dwellings 4-6 Dwellings 7+ Dwellings	3m	100mm	No
	4m	125mm	No
	6m	150mm	1 Layer 665
Light Commercial (not requiring specific design)	4m	150mm	1 Layer 665
Industrial (not requiring specific design)	6m	150mm	1 Layer 665

NOT TO SCALE