



Wairoa Wastewater Scheme

Wairoa War Memorial Hall, 31st July 2017



INTRODUCTION

Background

- What is the Wairoa Wastewater System?
- Issues with the current system

Consent Process

- What does Council need to do?
- Stakeholder Focus Group & Community Engagement

Work Underway

- Cultural assessment
- Environmental Investigations
- Recreational survey
- Affordability

Options

- What are the options we've looked at?
- Costs
- The big picture – looking at overall health of the Wairoa River.
- Questions and Feedback on options

Next Steps

- Where to from here?
- Any agreed actions?

Cup of tea



PART 1: BACKGROUND

- 1) What is the wastewater system?
- 2) What are the issues with it?

WHAT WE KNOW

-POPULATION AND FLOWS



Population

- 4,000 people live in Wairoa – plus businesses/schools/clubs
- Treatment ponds were built to cope with 10,000 people

Average Dryweather Wastewater Flow

- 1,900 m³/d (63 milk tankers every day)

Peak Wastewater Flow

- 8,000 m³/d (has previously reached 18,000 m³)

WHAT WE KNOW

-CURRENT RETICULATION NETWORK



40 km of pipes

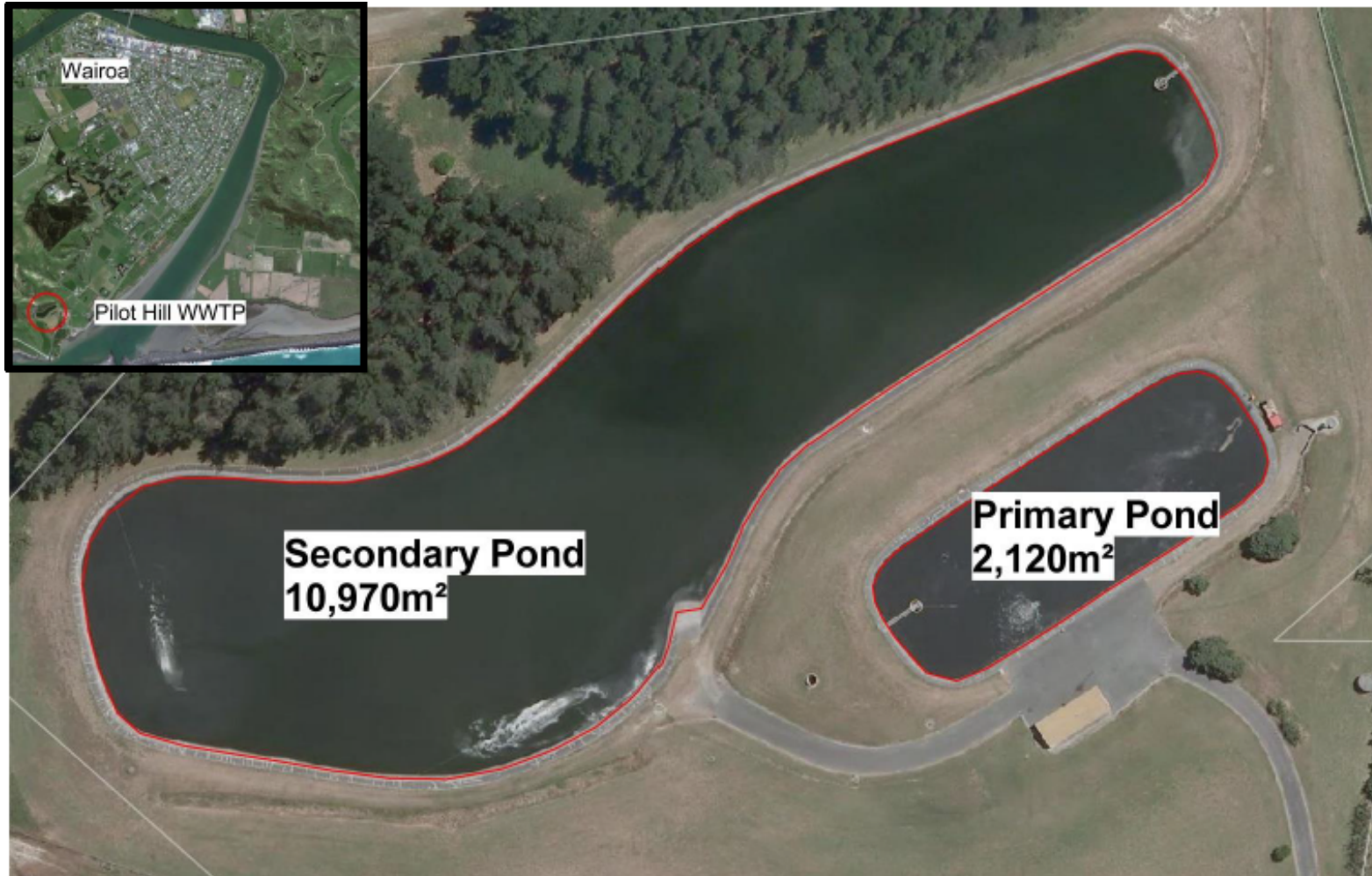
5 pump Stations

Originally built around 1948 –
with improvements since then

Treatment Ponds built in
1980s



WHAT WE KNOW -TREATMENT PONDS



WHAT WE KNOW -DISCHARGE



Built in 1981

150 m from riverbank

“Diffuser” recently installed





WHAT WE KNOW -ISSUES

Reticulation pipes

- Leaks
- Stormwater inflow
- Capacity limitations

Pump stations

- Capacity
- Overflows
- Inflows

Treatment

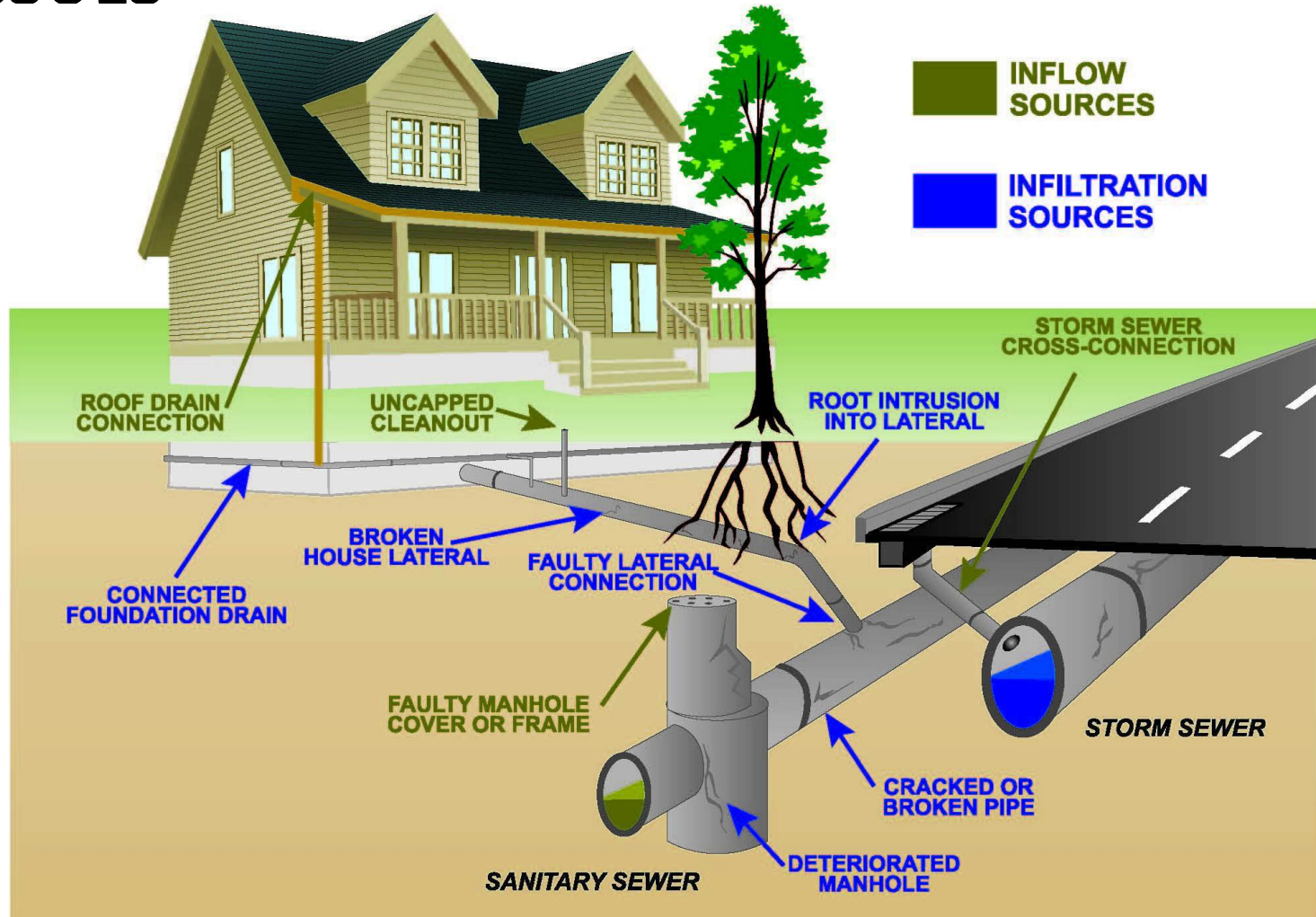
- Limited storage

Discharge

- Can get blocked
- Poor water quality in river
- Bar closure
- Outgoing tide discharge



WHAT WE KNOW -ISSUES





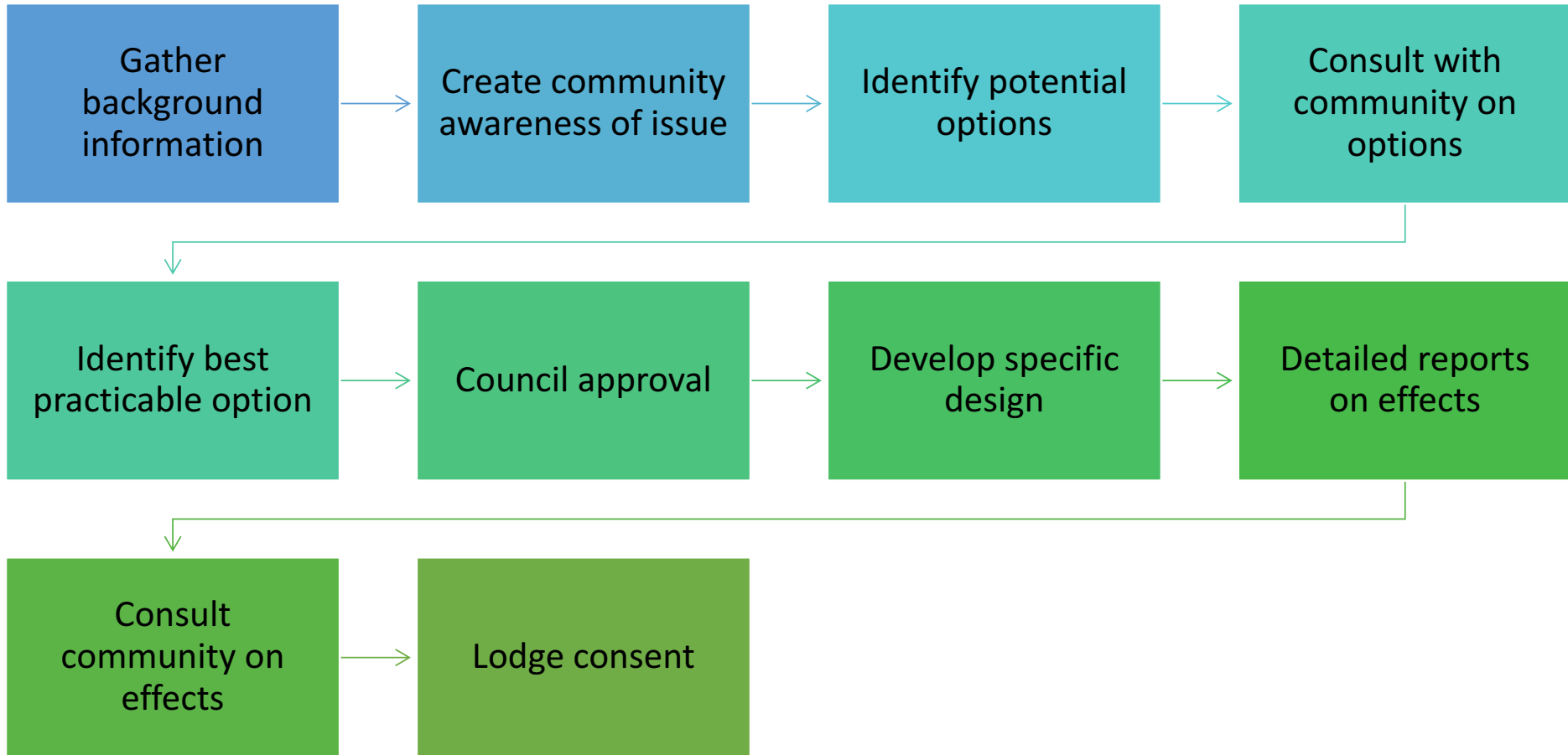
Questions on Part 1?



PART 2: RESOURCE CONSENT & COMMUNITY INPUT

- 1) What is the process?
- 2) Stakeholder Focus Group
- 3) Community involvement

RESOURCE CONSENT PROCESS

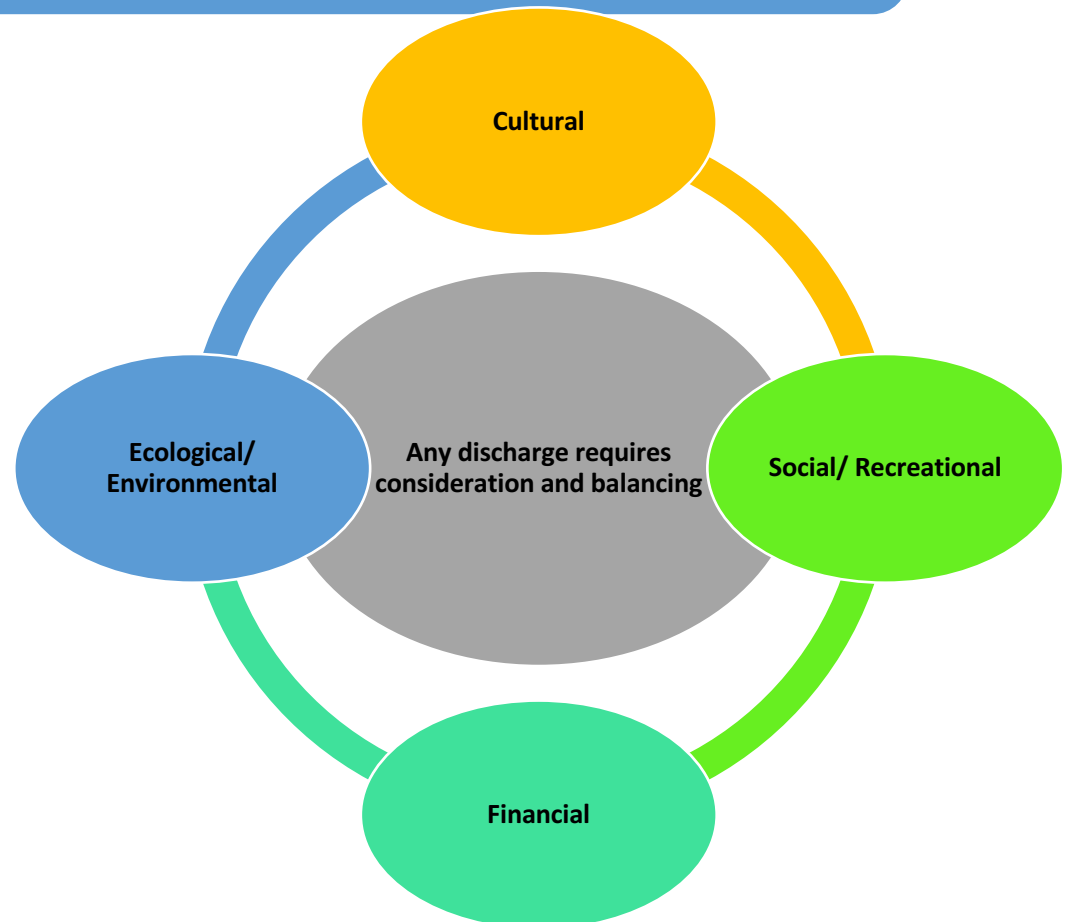




DEVELOPING THE OPTIONS

Need to balance four pillars

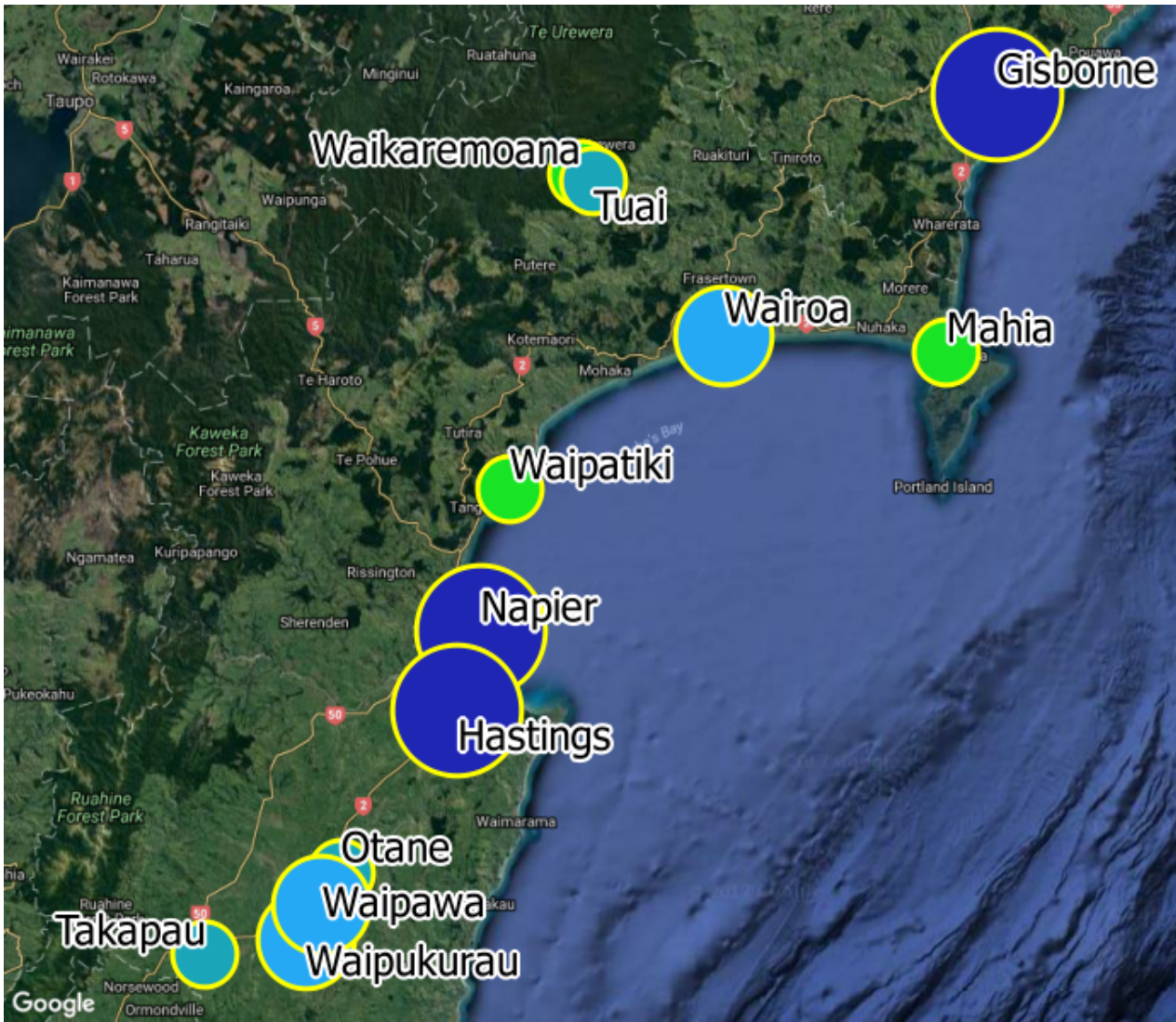
- **Recreational**
- **Cultural**
- **Financial**
- **Environmental**





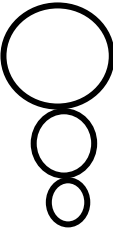
WHAT WE KNOW

-WHAT ARE OTHERS DOING



Legend

- Cities >30,000 people
- Towns <5,000 people
- Settlement <750 people



Discharge Method

- Irrigation to land
- River/stream
- Ocean



STAKEHOLDER FOCUS GROUP



Membership

- 2 councillors,
- 3 tangata whenua members nominated via Maori Standing Committee,
- 1 AFFCO rep,
- 1 business person,
- 1 youth member, and
- 1 senior citizen

STAKEHOLDER FOCUS GROUP



Activity

- Convened in April
- 5 meetings
- Site visits to Hastings and Waipukurau
- Providing feedback on investigation reports, options, affordability, values that are important to different parts of our community

COMMUNITY ENGAGEMENT



➤ This meeting is just the first step...Council wants worthwhile and meaningful engagement

Meetings with interest groups (by request) tomorrow.

Reporting back to the community and seeking input as the project proceeds

More discussion on what YOU want before we finish today



Questions on Part 2?



PART 3: WORK UNDERWAY

Environmental Investigations
Recreational Survey
Cultural assessments
Affordability

TECHNICAL AND ENVIRONMENTAL



Planning Report

Need to consider options (BPO), need to address potential for land discharge, cultural matters, DoC considerations

Current system performance

WWTP is generally performing within expected standards for treated effluent quality

Land Discharge Opportunities

5 zones of land, with limited highly suitable within 10 km for irrigation

Natural Hazards

Potential for flooding and tsunami.

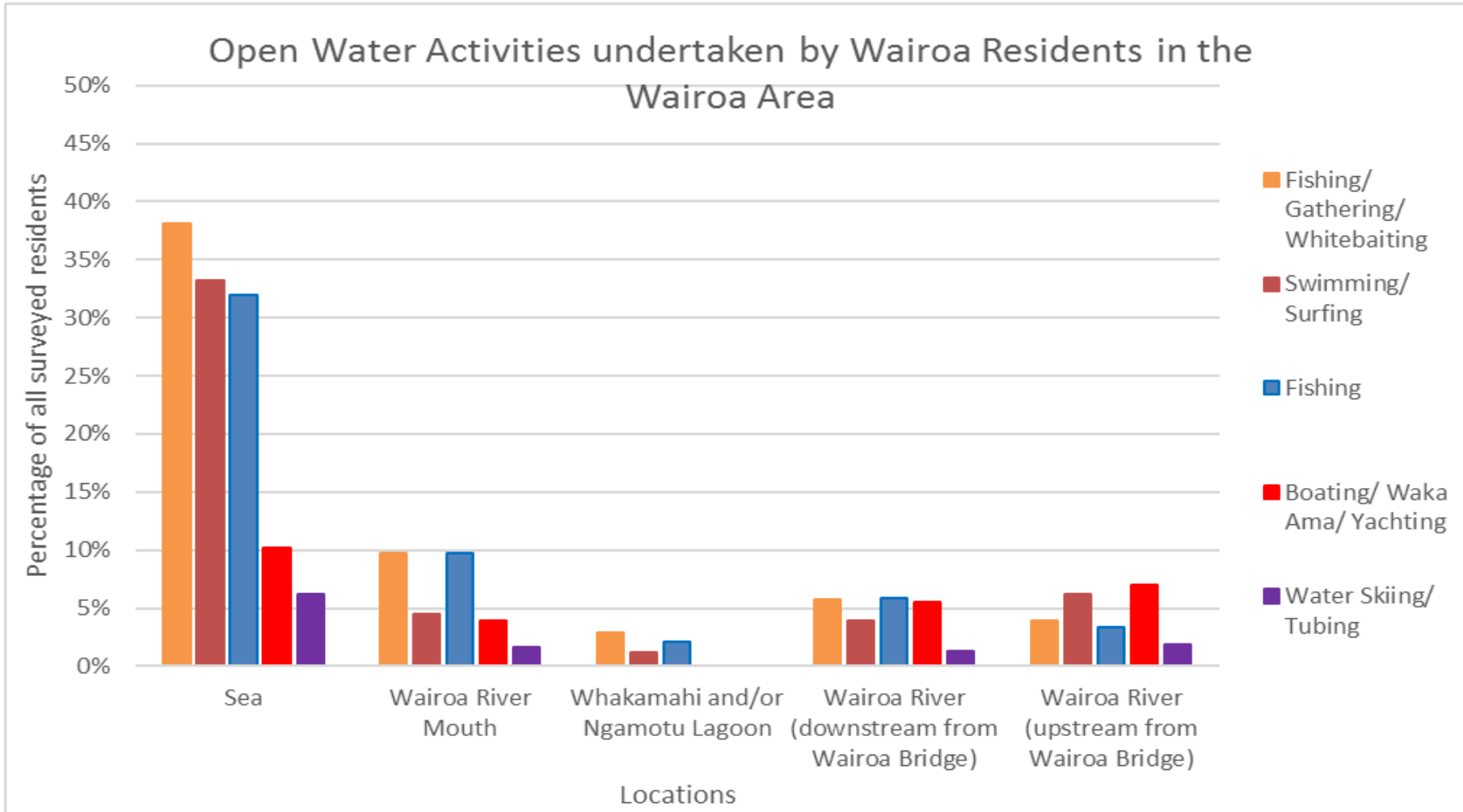
Effects of current discharge

No measurable impact in sediment or fauna around discharge

Public Health

No effects attributed to current discharge

RECREATIONAL USE



TANGATA WHENUA VIEWS



Informative report

To guide the development of options. What are the things that need to be considered when options are being developed and assessed

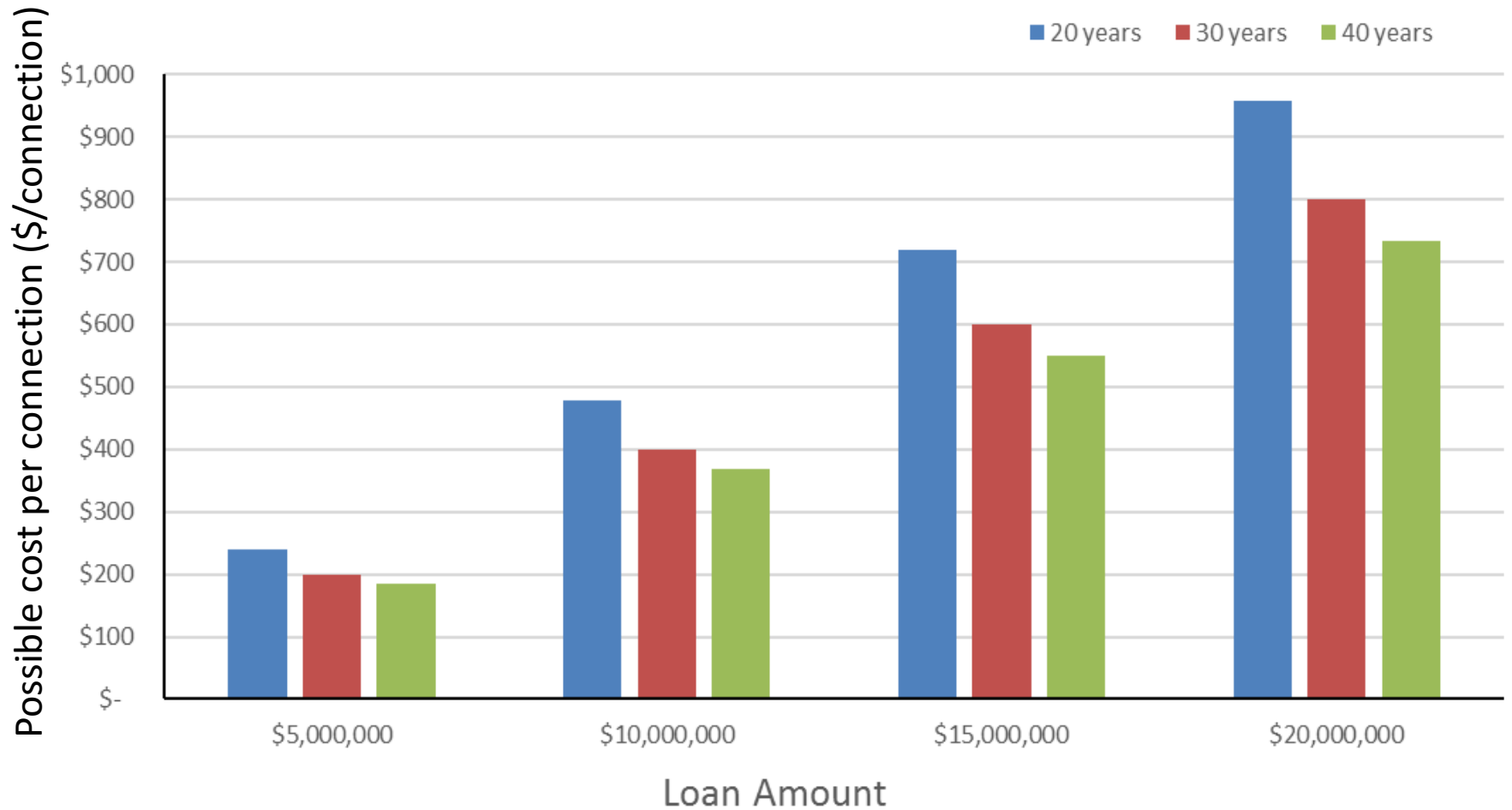
Engagement

Hui with tangata whenua. Targeted engagement with tangata whenua

Cultural Impact Assessment

A formal assessment of the chosen option

AFFORDABILITY CONSIDERATIONS





As reports are completed they will be made available on-line.

(via WDC Website www.wairoadc.govt.nz)



Questions on Part 3?



PART 4: OPTIONS

- 1) Common options for wastewater treatment
- 2) The bigger picture for river health
- 3) The 'Whangawehi Model'

OPTIONS



Water

Land

Direct to Water

Through Land

Stay on Land

River

Ocean

Land passage

Forestry

Small Holdings

Large Holdings

Combinations are possible

COSTS

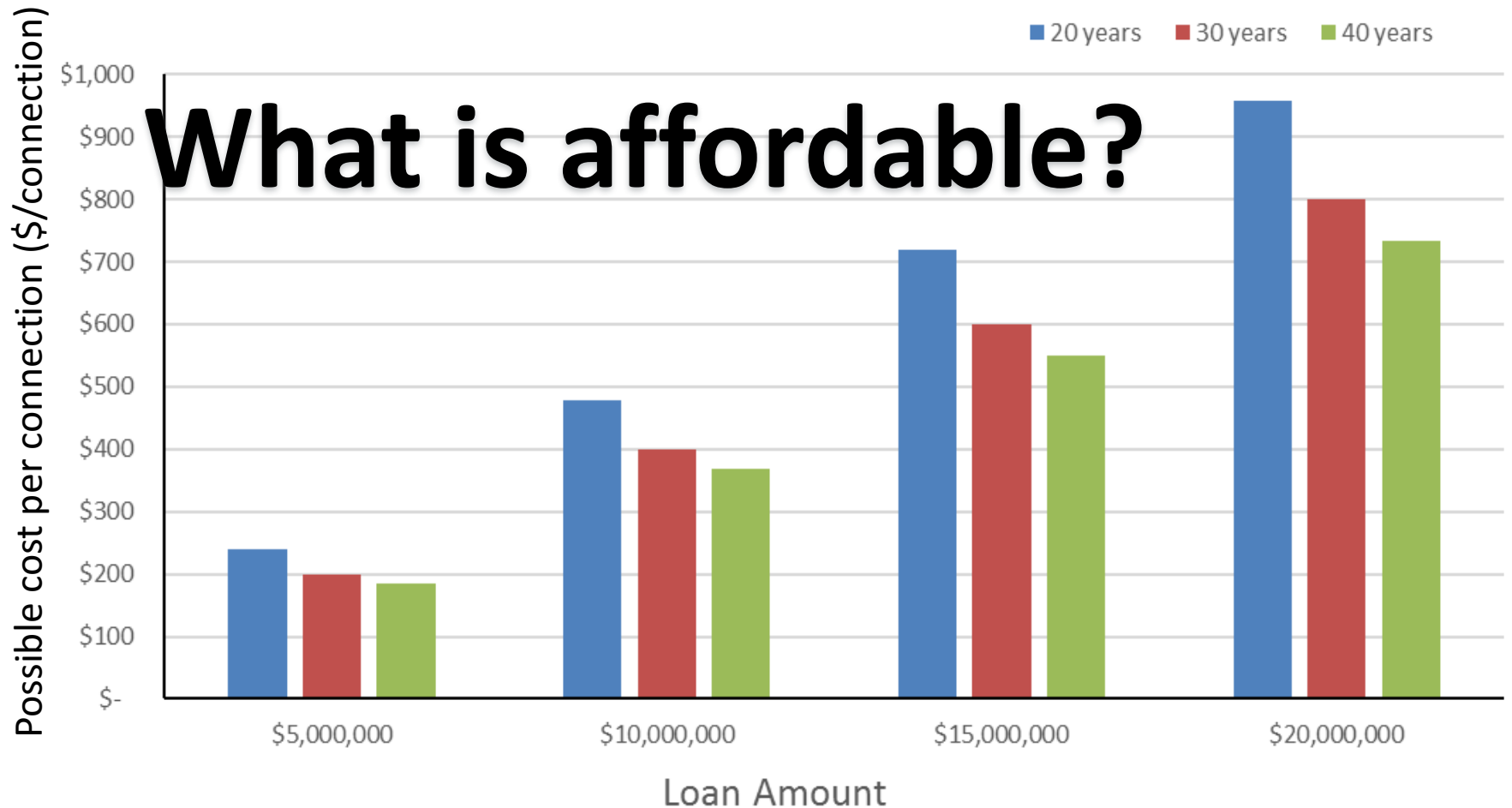


Options range from as 'low' as \$2 Million to over \$30 Million

Less than \$100 to over \$800 per house per year

Stakeholder Focus Group considered that affordability varied from around \$50 - \$400 per year (this is about \$1 - \$8 per week)

AFFORDABILITY CONSIDERATIONS



THE BIGGER PICTURE



Concerns about how the ponds came to be where they are.

Investigations and information available show no environmental effect and no public health effect.

Cultural Concerns and Affordability are becoming the key areas for further consideration.

Feedback from Stakeholder Group is that overall river health is a major concern.

THE BIGGER PICTURE



Removing the wastewater discharge completely would have no measurable positive effect on overall *physical health* of the Wairoa River

Potential for far greater long term positive effects by investing \$\$\$ to improve river health - bigger bang for the bucks

The Whangawehi model – led by tangata whenua – supported by Councils – inclusive of the whole community – National Award!



Questions on Part 4?

Feedback on the Bigger Picture / Holistic approach?

ONGOING ENGAGEMENT



Council intends do more work on the 'bigger picture' and come back to discuss.

Are there any specific actions you would like Council to take?

Council developing options based on technical report and community preference – have your say

