

WAIROA DISTRICT COUNCIL ... IN FOCUS

1 February 2018

MAYORAL COLUMN



Mayor Craig Little

I am pleased we have had a good turnout from the community who attended and gave feedback at the Nuhaka, Wairoa and Raupunga community consultation meetings for the proposed Revenue and Finance policy.

I want to specifically thank the Nuhaka community for hosting us at Kahungunu Marae, and everyone who attended.

Councillors and I heard loud and clear the feedback from these meetings, with an overwhelming indication to keep things the same with our Revenue and Finance

policy, to keep the status quo. We are here to listen, and your Councillors and I have taken your feedback onboard.

I also want to settle confusion around how valuations take place: this is done by Valuation New Zealand, not Wairoa District Council. I think whilst some have said the letters that were dropped to our ratepayers was hard-hitting, I think we needed to do this to get the level of engagement and the number of responses that we've received so far, which is great.

Interestingly enough, there was a suggestion at the Nuhaka consultation meeting that because we have an under-spend of \$8 million, we were rating to accumulate.

What the questioner overlooked was this under-spend was not rated for, as it comes from our appropriate reserves as a loan, and all that is rated is the interest.

I would also like to clarify the "status quo" in this proposal, as many of you have assumed that this means your rates will not increase. This is not the case. The status quo simply means that we continue using the system we currently have in place to calculate your rates. The cost for things go up regardless, i.e. power and petrol and we



Consultation meeting Nuhaka

This level of engagement is great and thank you to everyone for getting involved and making your views heard. All the residents who attended the past three meetings made it quite clear what their feelings were. This is the feedback that we want so we can decide what's best for our ratepayers and our whole community.

We share the same thoughts and frustrations with residents around our rating system, and yes, trust me when I say we too want our rates to be more affordable, as we and our whanau are all ratepayers as well.

We need to remember that one of our big issues is growing our population. The graphic below shows a comparison between Wairoa's population numbers and our neighbours. We as a Council are doing what we can to increase those numbers on a shoe-string budget.

Councillors and I have made no pre-determined decisions regarding this proposal. We will make our decision once all the feedback is received.



Consultation meeting Wairoa

are bound by central government legislation to factor in the cost of inflation when we have to set the rates.

I also wanted to emphasise that any feedback voiced at these meetings are being very much considered alongside the written submissions Council receives.

There are almost 50 differentials in our rating system that must be taken into account when calculating your rates, that's why there is a PROPOSAL before our community to have that system reviewed. I have been on Council for a number of years - four as your Mayor - and believe me when I say the discussion around reviewing this system gets more difficult every year.

The next community consultation meeting will be held today at the Tuai Community Hall at 6pm.

The full proposed Revenue and Financing Policy, along with the analysis of key changes, are available on Council's website www.wairoadc.govt.nz, Council's main office in Queen Street, Wairoa Centennial Library and the Wairoa i-SITE.

FOR YOUR DIARY

MĀORI STANDING COMMITTEE

Thursday, 8 February: 12.30pm

ECONOMIC DEVELOPMENT COMMITTEE

Tuesday, 13 February: 1.30pm

EXTRAORDINARY COUNCIL MEETING

Tuesday, 20 February: 10am - 1pm



CONTACT US

Wairoa District Council
Queen St, Wairoa
info@wairoadc.govt.nz
(06) 838 7309

**GREAT THINGS
GROW HERE™**
HAWKE'S BAY NEW ZEALAND

COMMUNITY CONSULTATION MEETING - PROPOSED REVENUE & FINANCING POLICY

Council is now seeking feedback and input from the community around its draft Revenue and Financing Policy. Face-to-face community consultation meetings will be held on the following dates and locations from **6PM TO 8PM**.

TUAI: Thursday, 1 Feb 2018, at the Tuai Community Hall

You can also submit your feedback on our website.

www.wairoadc.govt.nz

SUBMISSIONS

CLOSING DATE

FEBRUARY 9, 2018.

Call us on 838 7309 for more info.

PEOPLE PER KM²



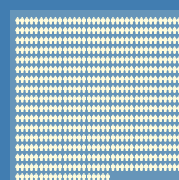
WAIROA
2



GISBORNE
6



HASTINGS
15



NAPIER
580